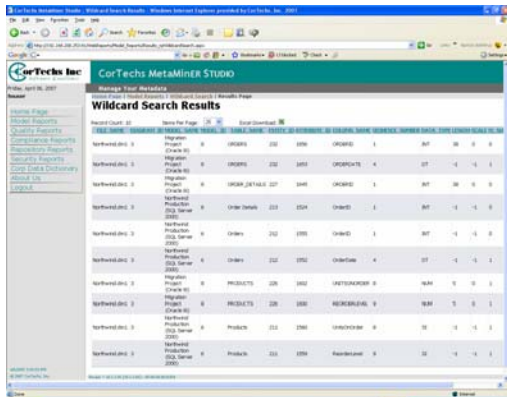


Enterprise Metadata Repository



The Enterprise Metadata Repository, which is a mission critical application for a Fortune 10 financial firm specializing in home mortgage based securities, contains both business and technical metadata for all of their core systems, databases, processes, and interfaces. It supports all applicable phases of the software development lifecycle including design, development, test, implementation, and change control. The Enterprise Metadata Repository is built on Embarcadero's ER Studio product. The system was implemented in January of 2006. The initial

purpose of the Enterprise Metadata Repository was to provide consistent metadata reports to auditors of the company's financial re-statement effort. Since then, the purpose of the Enterprise Metadata Repository has evolved into a single source for metadata across all of the enterprise's business and technology groups.

As a part of the Enterprise Metadata Repository project, CorTechs was responsible for the management and implementation of:

- Program management support
- Model & change management support
- Training on ER Studio Repository
- Conversion of metadata in Oracle tables into ER Studio Models
- Design, Development, Test, and Implementation of a .NET query front-end to ER Studio Repository's Oracle Database
- Conversion of a .NET front end user interface connection from a custom-built Oracle Database to ER Studio's Repository Oracle Database
- Customized VB Macros to produce Data Model Reports in HTML, Excel, and PDF formats
- Production Support of an application with over 500 users, will be 1500 users by the end of 2007
- Conversion of ERWIN Data Models into ER Studio Data Models
- Automated Reports for Data Model Quality and Cleanup
- Approximately 200 Data Models are actively managed in the repository
- Approximately 32,000 Tables/Entities are actively managed in the EMR
- Approximately 500,000 Columns/Attributes are actively managed in the EMR